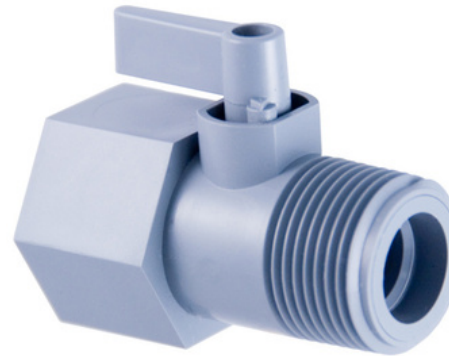


425 Series Ball Valve



Design Considerations

The 425 Series Two-Way Ball Valve design promotes multiple configurations to fit the exact end use application. Gray PVC is the standard material and is an NSF Standard 61 approved material filled polypropylene is available for chemical resistance applications. The lever handle is standard with an optional round handle available.

Configure your exact valve



Specifications:

Cv — 8.0

Maximum Operating Pressure — 125 psi

Maximum Operating Temperature — 140°F

Ball Through Hole Diameter — .437

Material Options

Body, Handle and Ball - Gray PVC (Standard), Gray Filled Polypropylene, White PVC, White Filled Polypropylene

Seal Options

Buna-N, Ethylene Propylene

End Options

1/2 Female x 1/2 Male NPT	3/4 Male x 3/4 Male Garden Hose
3/4 Female x 3/4 Male NPT	1/2 Socket x 3/4 Male Garden Hose
3/4 Male x 3/4 Male NPT	3/4 Socket x 3/4 Male Garden Hose

Handle Options

Flag Handle (Standard), Round Handle

Example of how to order:

Body Material	Inlet End	Outlet End	Seal	Handle
PVC	3/4 FNPT	3/4 MNPT	Buna-N	Round

Part Number PVC 425-12F12M-B, RND HDL

The handle will lie over the open port when the valve is in the full open position. Part numbers are a description of the valve as read left to right, Inlet to Outlet to Outlet.

Example: PVC 425-12F12M-B,RND HDL = 3/4 FNPT Inlet x 3/4 MNPT Outlet