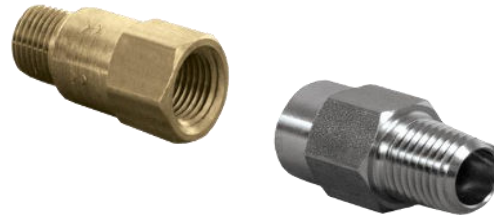


410 Series Piston Check Valves



Design Considerations

- Incorporates piston with an embedded o-ring that seals on the seat
- Pressure in flow direction moves piston and seal off seat, exposing cross holes in the piston
- Compact design and has positive seal at very low back pressure or slight vacuum
- UL/ UR configurations are available and rated to 500 psi

Configure
your exact valve



SCAN ME

Specifications:

Material Options	BODY and PISTON - 316 Stainless, Brass RETAINER - 15-7 Stainless, Beryllium Copper	
Plating Option	No Plating Electroless Nickel Plating	
Body Option	1/4 Male NPT Inlet x 1/4 Male NPT Outlet 1/4 Male NPT Inlet x 1/4 Female NPT Outlet 1/4 Female NPT Inlet x 1/4 Male NPT Outlet *Brass Only* 5/16 Hose Barb x 5/16 Hose Barb	
Seal Option	Buna-N Ethylene Propylene Fluoroelastomer (Viton®) Neoprene	Perfluorelastomer Silicone Aflas®
Spring Option: Material - Cracking Pressure	302 Stainless -33 psi, 1 psi, 2 psi, 3 psi, 4 psi, 5 psi, 10 psi, 20 psi, 25 psi, 30 psi Hastelloy® -1 psi, 3 psi, 5 psi, 15 psi, 25 psi No spring	
Cv Value	0.6	
Full Port	.203 in	
Maximum Operating Pressure	500 psi	
Temperature Range	*** NOT RATED FOR STEAM*** Buna-N -350F to +250°F Ethylene Propylene (EPDM) -650F to +300DF Fluoroelastomer (Viton®) -150F to +400DF Neoprene -350F to +250DF Perfluorelastomer +SDF to +550°F Silicone -65DF to +400DF Aflas® +250F to +450DF	

Example of how to order:

Material	Inlet Port	Outlet Port	Seal	Spring
Stainless	1/4 FNPT	1/4 MNPT	Viton®	3 psi Hastelloy

Part Numbers are a description of the valve as read left to right, Inlet Port to Outlet Port.

CHK SST 410-4F4M-F, 3#, HAST = Stainless steel body and ends, piston

check valve, 1/4 Female NPT Inlet x 1/4 Male NPT Outlet, Viton® Seals, 3 psi Hastelloy Spring